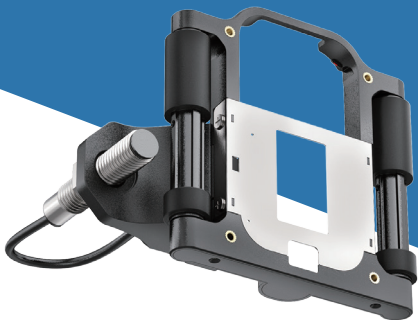


Conveyor Integration Module User Manual

Version V1.0



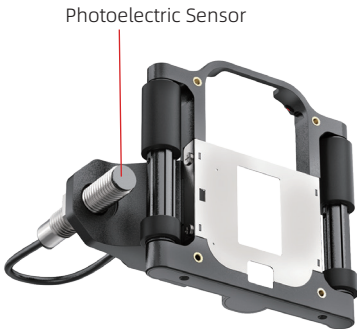
Thank you for choosing our product. Please read this manual carefully before use.

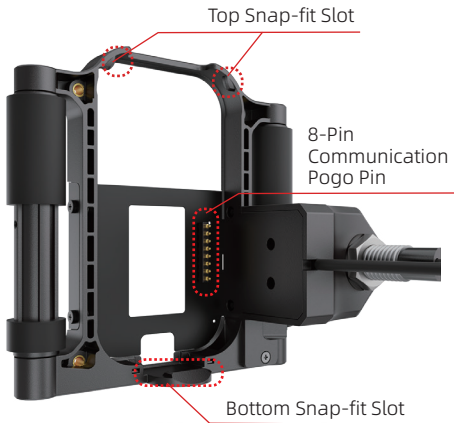
1.Product Introduction

1.1 Product Overview

This product is a buckle designed for high-volume printing on automated production lines. Made of high-strength ABS material, it features easy installation and stable operation, meeting continuous high-speed printing demands in industrial workflows.

1.2 Product composition





1.3 Product Specifications

Dimensions	L * W * H (12.4*10.4*4.5cm)
Weight	111g
Material	ABS

2. Operating Guide

2.1 Installation Steps

1、 **Align the Slot:**Position the upper part of the buckle into the machine's slot.



2、 **Secure the Buckle:**Firmly press the bottom of the buckle until it fully locks into the printer, ensuring stable installation.



2.2 Removal Steps

1、 **Release the Bottom:** Use your hand to pry open the bottom of the buckle to detach it from the printer.



2、 **Remove the Buckle:** Once loosened, gently lift the buckle upward to complete removal.



2.3 Usage Instructions

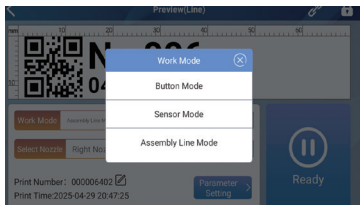
1、 **Secure the Device:** Firmly mount the inkjet printer with installed conveyor buckle onto the production line bracket.



2、 **Position the Print Head:** Adjust the vertical distance between the print head and printing surface (recommended within 5mm).



3、 **Mode Configuration:** Set the work mode to "Assembly Line Mode".



4、 **Print Delay adjustment:** Adjust the print delay parameters properly and set the specific values according to the actual printing position requirements

Note: This value indicates the distance at which the device delays printing after the sensor detects an object



