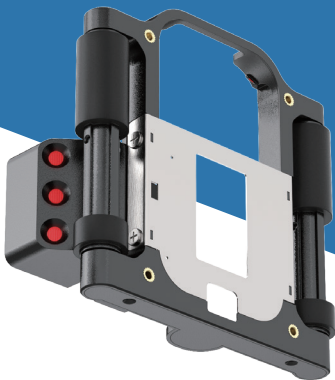


Laser Alignment Module User Manual

Version V1.0



Thank you for choosing our product. Please read this manual carefully before use.

1.Product Introduction

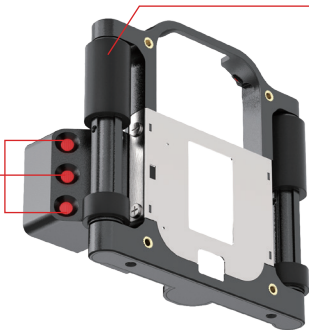
1.1 Product Overview

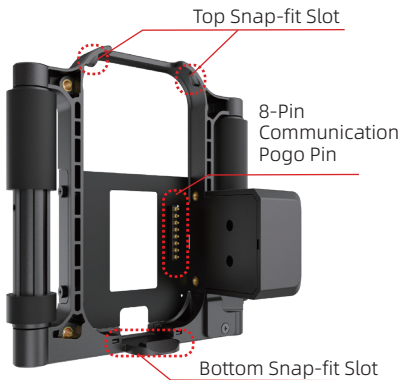
This product is a buckle designed for precise flat-surface positioning and printing. Made of high-strength ABS material, it ensures high stability and durability. Utilizing laser alignment, it enables quick print positioning to improve work efficiency.

1.2 Product composition

Encoder Synchronization Wheel

Laser Pointer Output





1.3 Product Specifications

| | |
|------------|-----------------------------|
| Dimensions | L * W * H (10.4*10.4*4.5cm) |
| Weight | 90g |
| Material | ABS |

2. Operating Guide

2.1 Installation Steps

1、 **Align the Slot:**Position the upper part of the buckle into the machine's slot.



2、 **Secure the Buckle:**Firmly press the bottom of the buckle until it fully locks into the printer, ensuring stable installation.



2.2 Removal Steps

1、 **Release the Bottom:** Use your hand to pry open the bottom of the buckle to detach it from the printer.



2、 **Remove the Buckle:** Once loosened, gently lift the buckle upward to complete removal.



2.3 Usage Instructions

1、 **Laser Alignment:** Align the laser with the target printing position.



2、 **Start Printing:** Press the print button and slide the machine to complete printing.



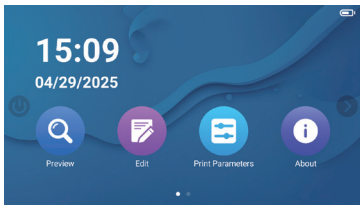
2.4 Print Position Calibration

Adjust the inkjet Print Delay. This parameter is used to control how far the machine slides before starting to print (unit:millimeters)

Recommended value: **50mm** (suitable for precisely aligning the laser starting position)

Steps:

- 1、 Enter the Print Parameter Settings interface.



- 2、 Adjust the delay parameter as needed, fine-tuning gradually for optimal results.



