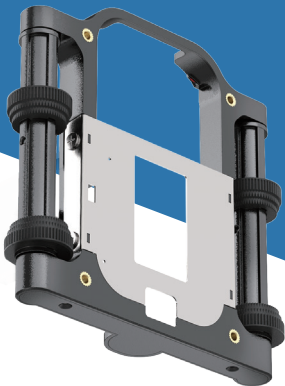


Pipe Printing Module User Manual

Version V1.0



Thank you for choosing our product. Please read this manual carefully before use.

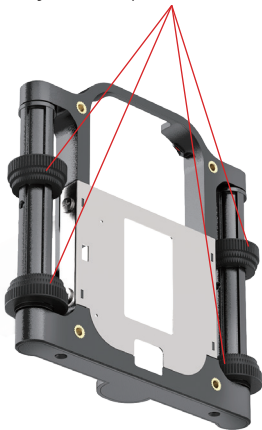
1.Product Introduction

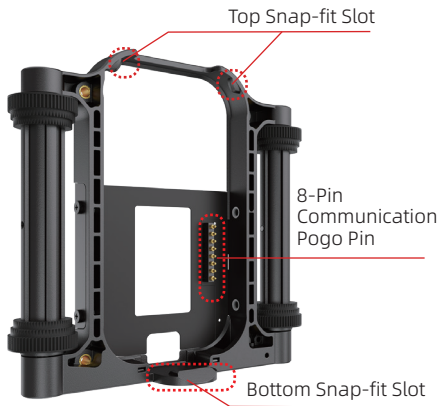
1.1 Product Overview

This product is a buckle designed for pipe positioning and printing. Made of high-strength ABS material, it offers easy installation and flexible adaptability, supporting printing needs for pipes of different diameters.

1.2 Product composition

Adjustable Pipeline Guide Wheel





1.3 Product Specifications

Dimensions	L * W * H (10.4*10.4*2.3cm)
Weight	69g
Material	ABS

2. Operating Guide

2.1 Installation Steps

1、 **Align the Slot:** Position the upper part of the buckle into the machine's slot.



2、 **Secure the Buckle:** Firmly press the bottom of the buckle until it fully locks into the printer, ensuring stable installation.



2.2 Removal Steps

1、 **Release the Bottom:** Use your hand to pry open the bottom of the buckle to detach it from the printer.



2、 **Remove the Buckle:** Once loosened, gently lift the buckle upward to complete removal.



2.3 Usage Instructions

1、 Modify the gap between rubber wheels according to the diameter of the pipeline to be printed.



2、 Securely clamp the adjusted rubber wheels onto the pipeline surface, Press the print button, Slide the device smoothly to complete printing.

