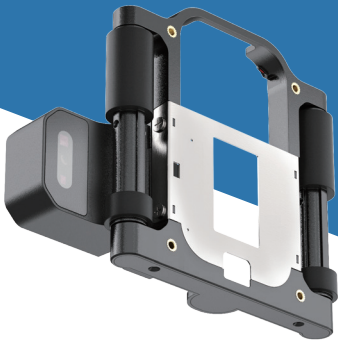


# QR & Barcode Scanner Module User Manual

Version V1.0



Thank you for choosing our product. Please read this manual carefully before use.

## 1.Product Introduction

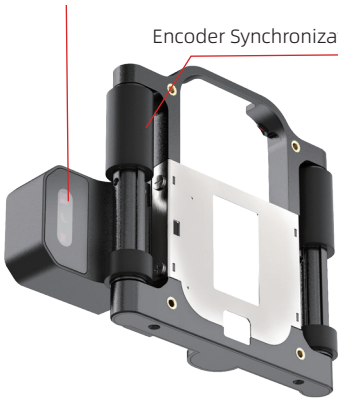
### 1.1 Product Overview

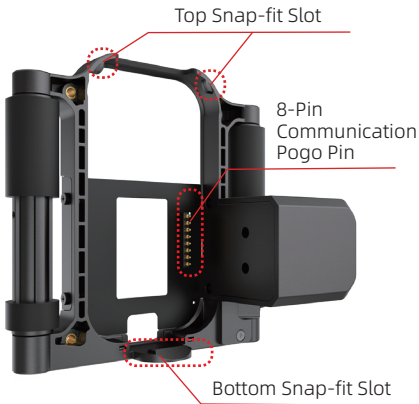
This product is a buckle designed for scanning QR codes/barcodes and subsequent printing. Made of high-strength ABS material, it provides accurate recognition and efficient replacement, allowing quick processing of variable content such as QR codes and barcodes.

### 1.2 Product composition

QR Code / Barcode Scanner Head

Encoder Synchronization Wheel





### 1.3 Product Specifications

Dimensions	L * W * H (12.4*10.4*4.5cm)
Weight	95g
Material	ABS

## 2. Operating Guide

### 2.1 Installation Steps

1、 **Align the Slot:**Position the upper part of the buckle into the machine's slot.



2、 **Secure the Buckle:**Firmly press the bottom of the buckle until it fully locks into the printer, ensuring stable installation.



## 2.2 Removal Steps

1、 **Release the Bottom:** Use your hand to pry open the bottom of the buckle to detach it from the printer.

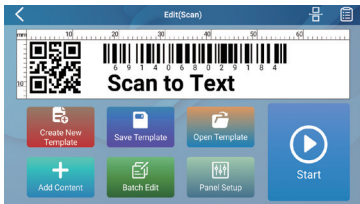


2、 **Remove the Buckle:** Once loosened, gently lift the buckle upward to complete removal.

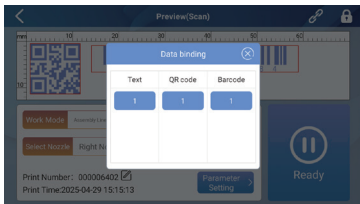


## 2.3 Usage Instructions

1、 Set the QR codes, barcodes or text to be replaced, then click "Start Printing".



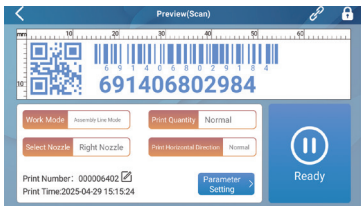
2、 On the print preview screen, click the "Bind" button in the upper right corner to select the QR codes/barcodes/text for replacement - bound content will be highlighted in blue.



3、 Aim the scanner at the QR code/barcode and long-press the print button to trigger scanning.



4、 After successful scanning, the bound content will be automatically replaced.



5、 Align the device with the target position and slide it to complete printing.

